

CERTIFICATE OF LOCATION OF GOVERNMENT CORNER

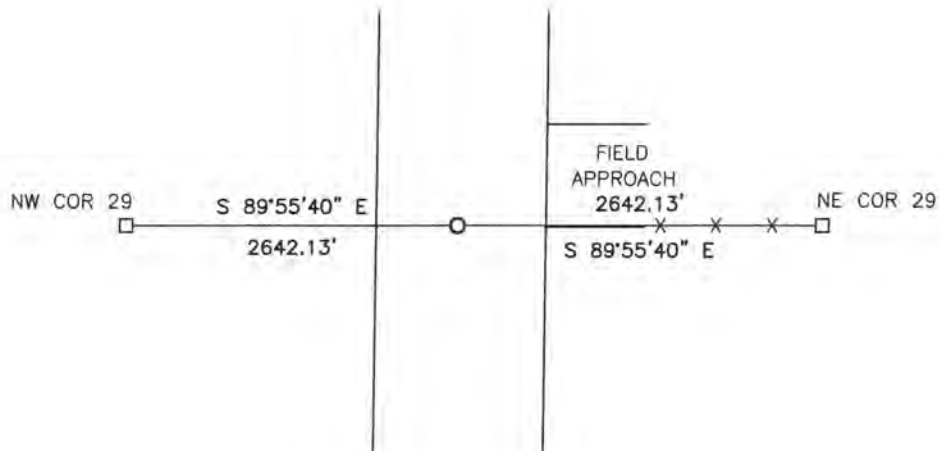
NORTH QUARTER Corner of Section 29, Township 108, Range 42, 5TH P.M.

STATE OF MINNESOTA, County of MURRAY

At the corner location shown on the sketch:

- On _____ found a _____
- left monument as found, lowered monument, removed monument (explain)
- On 6/27/14 placed a 5/8" iron w/seal #43844

SKETCH OF REFERENCE TIES



Minnesota State Plane Coordinate
System Murray County Datum
NAD83 (1996)
N: 205913.953
E: 461397.723

NO TIES

Statement of evidence relative to this corner location is on back of page.

I hereby certify that this document and the data contained herein was prepared by me or under my direct supervision.


SIGNATURE

1/14/15
DATE

Registration No. 43844

- Land Surveyor, Professional Engineer
- County Surveyor, County Engineer

OFFICE OF THE COUNTY RECORDER

County of _____

I hereby certify that this document was filed in the Co. Recorders office at _____, M on the _____ day of FEB 20 2015 A.D. 20 _____

County Recorder Cuelyn C. Larson

By _____, Deputy

DOCUMENT NO. _____

Statement of Evidence

In 1861, L.G.W. Fletcher did the original subdivision of the township.

On June 27, 2014, Bueltel-Moseng Land Surveying dug with backhoe in centerline of road and in line with fence to the east. Found nothing. Set $\frac{5}{8}$ " iron with seal #43844 midway and online between section corners.